

**FMP**

# SPECIFICATIONS:

Part Number	A Inside Diam.(in)	B Thickness (in)	C Flange Width (in)	Avail Length (ft)	Weight (lb/ft)	Hex Hardware (in)	Max Install Torque (Ft- lbs)	Hole Pattern	Meets Cooper E-80 loading
FMP 1.25-10/074	1.660	.074	1.07	5/10	2.4	5/16 x 1	25	A	
FMP 1.5-10/074	1.900	.074	1.07	5/10	2.6	5/16 x 1	25	A	
FMP 210/074	2.375	.074	1.07	5/10	2.9	5/16 x 1	25	A	
FMP 2.5-10/074	2.875	.074	1.07	5/10	3.3	5/16 x 1	25	A	
FMP 310/074	3.500	.074	1.07	5/10	3.8	5/16 x 1	25	A	
FMP 410/074	4.500	.074	1.07	5/10	4.6	5/16 x 1	25	A	
FMP 510/074	5.563	.074	1.07	5/10	5.4	5/16 x 1	25	A	
FMP 610/074	6.625	.074	1.07	5/10	6.3	5/16 x 1	25	A	
FMP 810/074	8.625	.074	1.07	5/10	7.9	5/16 x 1	25	A	
FMP 1610/074	16.000	.074	1.07	5/10	13.7	5/16 x 1	25	A	
FMP 210/137	2.375	.137	1.14	5/10	5.6	5/16 x 1.25	25	A	
FMP 2.5-10/137	2.875	.137	1.14	5/10	6.2	5/16 x 1.25	25	A	
FMP 310/137	3.500	.137	1.14	5/10	7.2	5/16 x 1.25	25	A	
FMP 410/137	4.500	.137	1.14	5/10	8.6	5/16 x 1.25	25	A	
FMP 510/137	5.563	.137	1.14	5/10	10.2	5/16 x 1.25	25	A	
FMP 610/137	6.625	.137	1.14	5/10	11.8	5/16 x 1.25	25	A	
FMP 810/137	8.625	.137	1.14	5/10	14.6	5/16 x 1.25	25	A	
FMP1010/137	10.750	.137	1.14	5/10	17.8	5/16 x 1.25	25	A	
FMP 1210/137	12.750	.137	1.14	5/10	20.8	5/16 x 1.25	25	A	
FMP 1410/137	14.000	.137	1.14	5/10	22.6	5/16 x 1.25	25	A	
FMP 1610/137	16.000	.137	1.14	5/10	25.4	5/16 x 1.25	25	A	
FMP 310/188	3.500	.188	1.313	5/10	10.4	5/16 x 1.25	25	B	coated/non-coated
FMP 410/188	4.500	.188	1.313	5/10	12.4	5/16 x 1.25	25	B	coated/non-coated
FMP 510/188	5.563	.188	1.313	5/10	14.6	5/16 x 1.25	25	B	coated/non-coated
FMP 610/188	6.625	.188	1.313	5/10	16.6	5/16 x 1.25	25	B	coated/non-coated
FMP 810/188	8.625	.188	1.313	5/10	20.6	5/16 x 1.25	25	B	coated/non-coated
FMP 1010/188	10.750	.188	1.313	5/10	25.0	5/16 x 1.25	25	B	coated/non-coated
FMP 1210/188	12.750	.188	1.313	5/10	29.0	5/16 x 1.25	25	B	coated/non-coated
FMP 1410/188	14.000	.188	1.313	5/10	31.4	5/16 x 1.25	25	B	coated/non-coated
FMP 1610/188	16.000	.188	1.313	5/10	35.4	5/16 x 1.25	25	B	
FMP 410/237	4.500	.237	1.362	5/10	16.8	3/8 x 2.5	44	B	coated/non-coated
FMP 2.5-10/250	2.875	.250	1.375	5/10	12.5	3/8 x 2.5	44	B	coated/non-coated
FMP 310/250	3.500	.250	1.375	5/10	14.2	3/8 x 2.5	44	B	coated/non-coated
FMP 410/250	4.500	.250	1.375	5/10	16.8	3/8 x 2.5	44	B	coated/non-coated
FMP 510/250	5.563	.250	1.375	5/10	19.7	3/8 x 2.5	44	B	coated/non-coated
FMP 610/250	6.625	.250	1.375	5/10	22.5	3/8 x 2.5	44	B	coated/non-coated
FMP 810/250	8.625	.250	1.375	5/10	27.9	3/8 x 2.5	44	B	coated/non-coated
FMP 1010/250	10.750	.250	1.375	5/10	33.6	3/8 x 2.5	44	B	coated/non-coated
FMP 1210/250	12.750	.250	1.375	5/10	38.9	3/8 x 2.5	44	B	coated/non-coated
FMP 1410/250	14.000	.250	1.375	5/10	42.2	3/8 x 2.5	44	B	coated/non-coated
FMP 1610/250	16.000	.250	1.375	5/10	47.6	3/8 x 2.5	44	B	coated
FMP 2410/250	24.000	.250	1.375	5/10	69.0	3/8 x 2.5	44	B	coated
FMP 610/280	6.625	.280	1.405	5/10	24.2	3/8 x 2.5	106	B	coated/non-coated
FMP 810/280	8.625	.280	1.405	5/10	31.4	3/8 x 2.5	106	B	coated/non-coated
FMP 1610/312	6.625	.312	1.437	5/10	59.8	3/8 x 2.5	106	B	coated/non-coated
FMP 2410/312	8.625	.312	1.437	5/10	86.6	3/8 x 2.5	106	B	coated
FMP 1010/375	10.750	.375	1.750	5/10	52.3	1/2 x 2.5	106	B	coated/non-coated
FMP 1210/375	12.750	.375	1.750	5/10	60.4	1/2 x 2.5	106	B	coated/non-coated
FMP 1410/375	14.000	.375	1.750	5/10	65.4	1/2 x 2.5	106	B	coated/non-coated
FMP 1610/375	16.000	0.375"	1.75"	5/10	72.0	1/2 x 2.5	106	B	coated/non-coated
FMP 1810/375	18.000	0.375"	1.75"	5/10	81.4	1/2 x 2.5	106	B	coated/non-coated
FMP 1910/375	19.000	.375	1.750	5/10	85.4	1/2 x 2.5	106	B	coated/non-coated
FMP 2110/375	21.000	.375	1.750	5/10	93.5	1/2 x 2.5	106	B	coated/non-coated
FMP 2210/375	22.000	0.375"	1.75"	5/10	97.0	1/2 x 2.5	106	B	coated/non-coated
FMP 2410/375	24.000	.375	1.750	5/10	105.5	1/2 x 2.5	106	B	coated
FMP 2810/375	28.000	0.375"	1.75"	5/10	121.2	1/2 x 2.5	106	B	coated
FMP 1810/500	18.000	.500	2.313	5/10	112.5	1/2 x 2.5	106	B	coated/non-coated
FMP 1910/500	19.000	.516	2.385	5/10	117.9	1/2 x 2.5	106	B	coated/non-coated
FMP 2410/500	24.000	.516	2.385	5/10	144.6	1/2 x 2.5	106	B	coated/non-coated



**FMP**

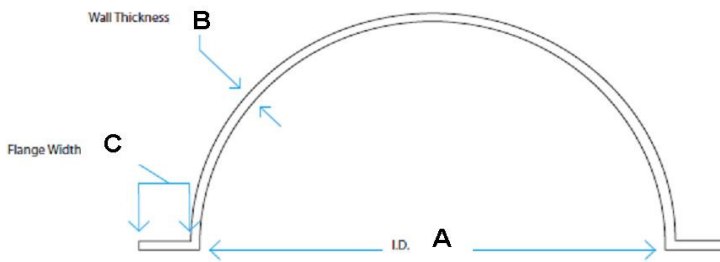
# SPECIFICATIONS:

Part Number	A Inside Diam.(in)	B Thickness (in)	C Flange Width (in)	Avail Length (ft)	Weight (lb/ft)	Hex Hardware (in)	Max Install Torque (Ft- lbs)	Hole Pattern	Meets Cooper E-80 loading
FMP 3210/500	32.000	0.5"	2.3125"	5/10	187.4	1/2 x 2.5	106	B	coated/non-coated
FMP 3610/500	36.000	0.5"	2.3125"	5/10	208.8	1/2 x 2.5	106	B	coated/non-coated
FMP 2010/625	20.000	.625	2.875	5/10	159.0	1/2 x 2.5	106	B	coated/non-coated
FMP 2410/625	24.000	.625	2.875	5/10	185.7	1/2 x 2.5	106	B	coated/non-coated
FMP 4010/750	40.000	.750	3.438	5/10	357.2	3/4 x 3	376	B	coated/non-coated

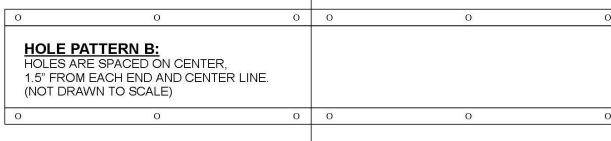
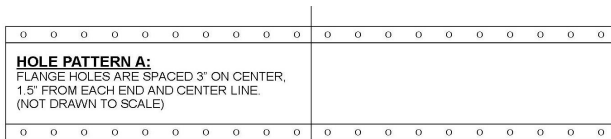
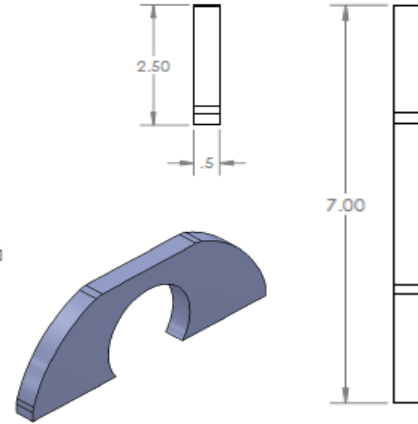
Notes: Armor Coat™ Grade 8 fasteners provide 150,000 psi minimum tensile strength (hex head).\*  
 Shear Strength = 90,000 psi (Industrial Fastener Institute - Inch Fastener Standards, 7th ed. 2003. B-8)  
 18-8 Stainless fasteners: Tensile strength = min 80,000 psi - typical 100,000 psi (Shear = 48,000 psi and 60,000 psi) \*  
 \* According to manufacturer

## PART NUMBER KEY: "FMP AALL/BBBM"

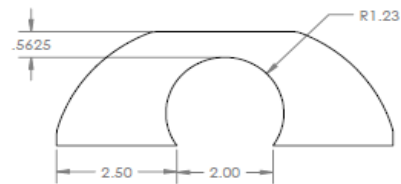
**AA** = I.D. (IN)=(IPS' O.D)      **LL** = LENGTH (FT)      **BBB** = WALL THICKNESS (IN)  
**M** = MATERIAL : **BLACK, GALVANIZED, STAINLESS STEEL, ALUMINUM**  
 (FMP is installed with staggered seams top and bottom. Pre-cut five foot sections may be ordered: LL = 05).



FMP CROSS-SECTION



FLANGE HOLE DETAIL



LIFTING EYE DETAIL